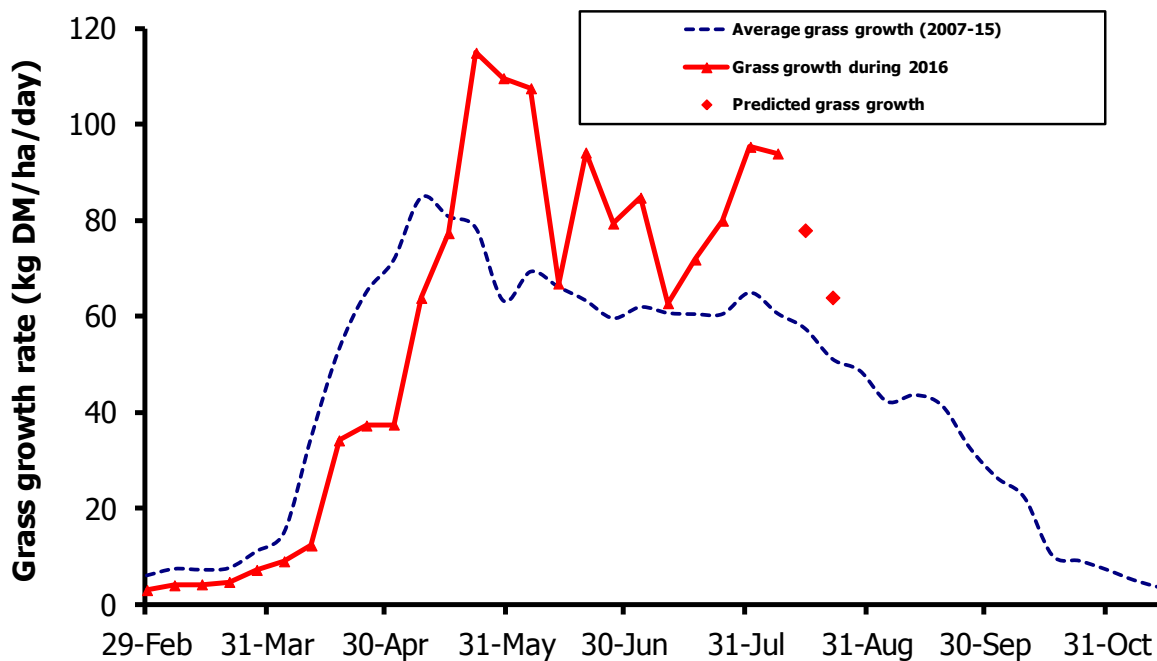


# GrassCheck

Week beginning 8 August



Grass growth and quality measured from swards at Hillsborough and Greenmount

Grass Growth (kg DM/ha/day)*		
Previous 3 weeks	8 August	94
Predicted	15 August	78
	22 August	64

\* 270 kg N/ha/year applied

Grass Quality	
Dry matter (%)	14.9
ME (MJ/kg DM)	11.6
Crude protein (%)	18.3
Sugars (% DM)	12.7

## Management notes.

- Growth rates are still well above average. Reasonable growing conditions are expected over the next two weeks and so growth rates, although declining, will remain above average for mid-August.
- Continue to ensure grass quantity and quality (2800-3000 kg/DM/ha) are optimised to maintain milk production.
- Where ground conditions allow, aim to get swards grazed down to 5-6 cms.
- Swards which were not grazed out during the previous cycle due to difficult ground conditions, round bale as soon as possible, as they are potentially going to be above the pre-graze target due to grass growth being above average. This will prevent grass being wasted and improve sward quality into the autumn.