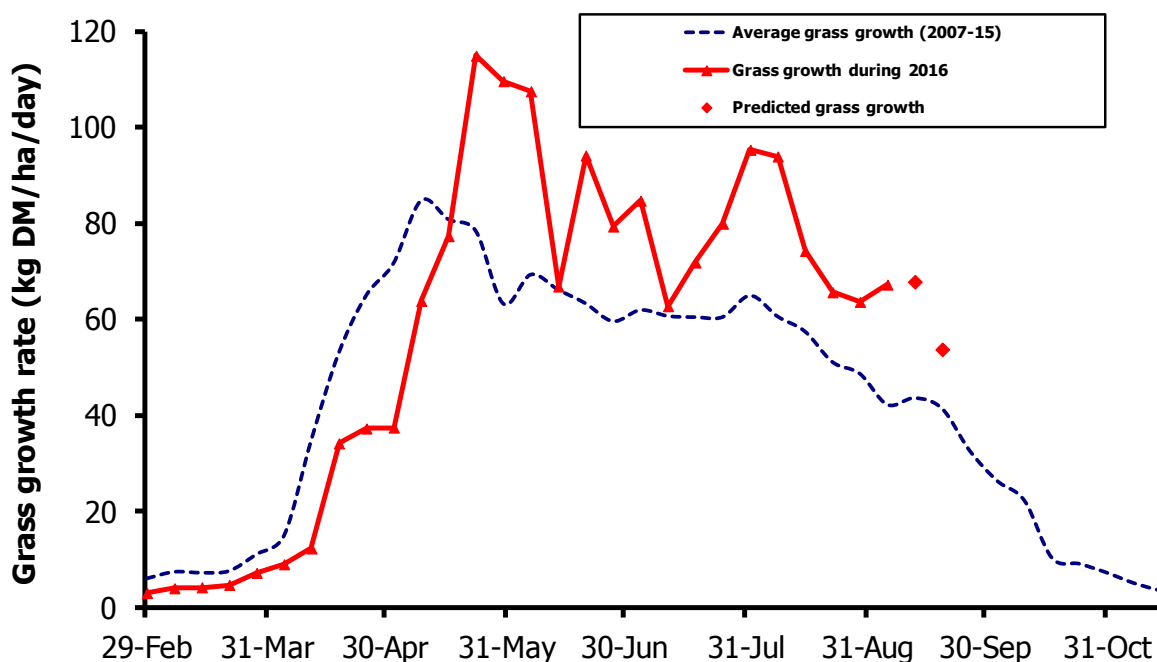


# GrassCheck

Week beginning 5 September



Grass growth and quality measured from swards at Hillsborough and Greenmount

Grass Growth (kg DM/ha/day)*		
Previous 3 weeks	5 Sep	67
Predicted	12 Sep	67
	19 Sep	54

\* 270 kg N/ha/year applied

Grass Quality	
Dry matter (%)	13.7
ME (MJ/kg DM)	11.3
Crude protein (%)	19.1
Sugars (% DM)	10.0

## Management notes.

- Growth remains higher than normal, due to the current warm spell. Next week's yields are also expected to be higher than average.
- With the 'closed period' for sowing chemical fertiliser fast approaching, (15<sup>th</sup> September), ensure that applications are up to date, to promote autumn growth.
- All available grassland should be brought into the grazing cycle, to aid the build up of grass for utilisation later in the autumn, when growth rates decrease.
- Take a flexible approach to grazing management to improve performance.
- As days get shorter, grass intakes will decrease, so parlour settings should be adjusted to take this into account.