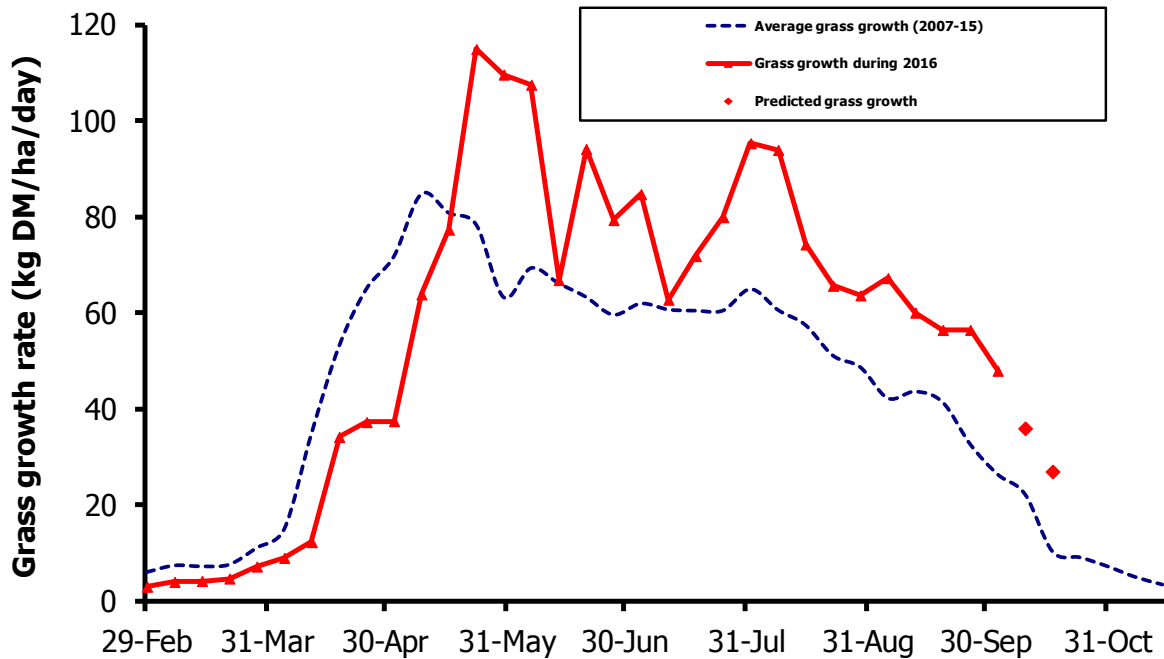


GrassCheck

Week beginning 3 October



Grass growth and quality measured from swards at Hillsborough and Greenmount

Grass Growth (kg DM/ha/day)*		
Previous 3 weeks	3 Oct	48
Predicted	10 Oct	36
	17 Oct	27

* 270 kg N/ha/year applied

Grass Quality	
Dry matter (%)	14.6
ME (MJ/kg DM)	11.7
Crude protein (%)	22.7
Sugars (% DM)	11.7

Management notes.

- Grass growth is declining as autumn progresses, but still remains well above the seasonal average and this trend is predicted to continue over the next 2 weeks.
- Grass quality on the plots has improved, both in terms of ME and sugars, reflecting the better weather of late. CP is typically high at this time of year.
- Make the most of improving ground conditions to get swards grazed out. Start with drier fields, adopt a flexible grazing approach to minimise poaching and sward damage.
- Once these swards are grazed out, do not re-graze, as this allows some grass to build up for early spring grazing next year.