



GrassCheck Beef and Sheep Farm Walk  
James Henderson, Kilkeel  
26<sup>th</sup> June 2025



# Farm Overview

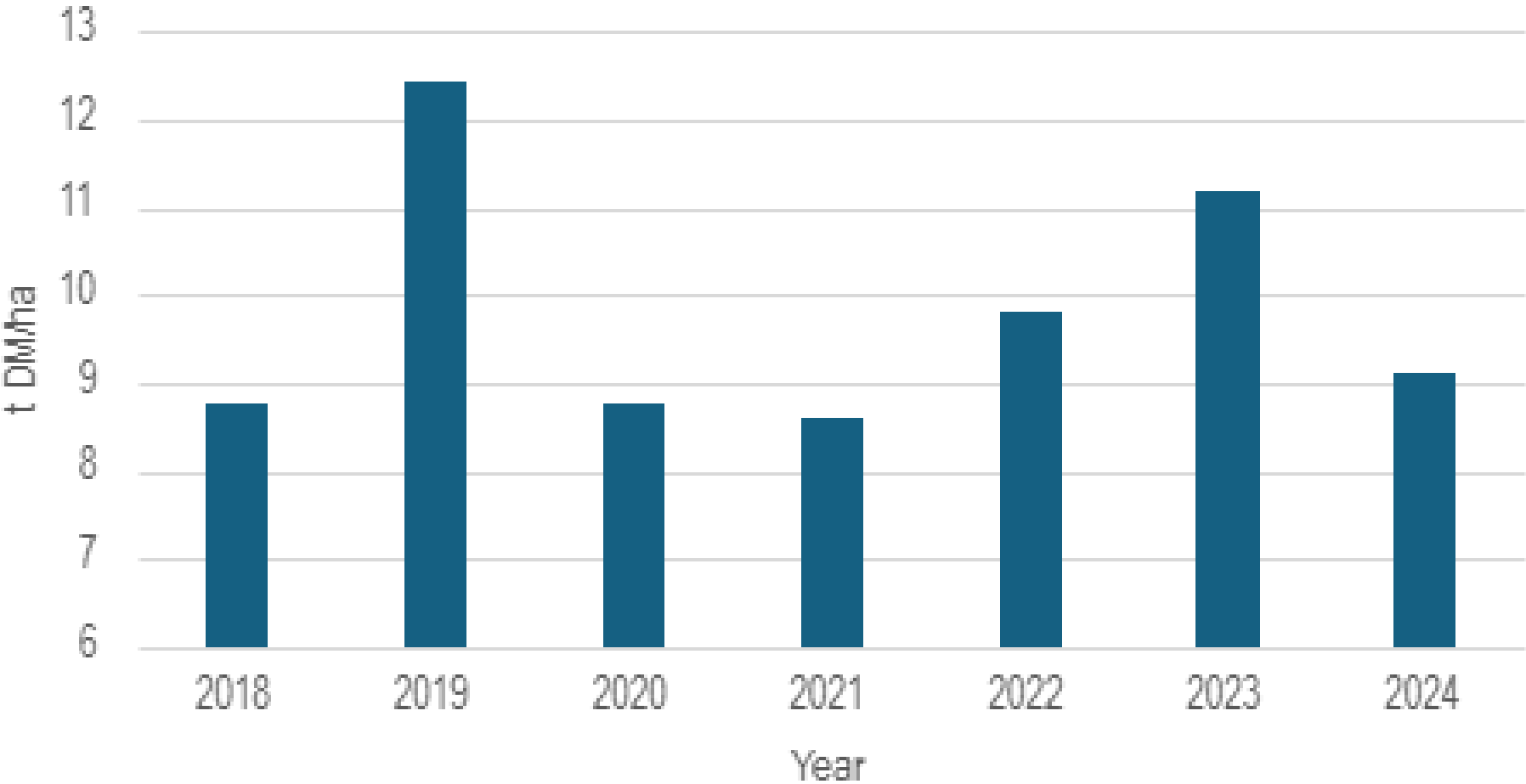
- Farm size: 148 acres 1 block
- Soil type: Light loam on mostly very free draining land
- 310 ewes put to ram (250 ewes + 60 ewe lambs)
- 90 dairy origin beef heifers a year (mostly BB and AA)
- All stocked finished on farm (heifers at 22-24 month)
- 4-5Ha winter barley grown each year for feed and bedding. This also forms part of rotation.

Farm KPI's	2021	2022	2023
Stocking rate (LU/ha)	2.82	2.88	2.66
Carcass output (kg/ha)	1355	1444	1311
Farm Gross Margin (£/ha)	1465	1944	1732

Sheep KPI's	2020	2021	2022
GH/ha	1231	1365	1275
KG DW/ha	443	429	434

- **Recording grass growth weekly since 2018**
- 21 ha across 24 paddocks and 2 mobs of cattle
- Turnout from mid-March to early April
- Grazes paddocks for 2 days in a 17–18 day rotation
  - Target Average Farm Cover: 2400–2500 kg DM/ha (8–9 cm)
  - Target Pre-grazing cover: 3000–3100 kg DM/ha (13–14 cm)
  - Target Post-grazing cover: 1600–1700 kg DM/ha (5–6 cm)
- Alternate grazing between cattle, sheep, and silage
- Use water bowsers and place them in a different location each grazing

# James Henderson Annual Grass Yield tDM/Ha



# Cattle grazing block

AgriNet

Date Measured21/06/2025

Selected MobAll Mobs

Daily Growth73.4 (over 7 days (95.1))

Farm Cover2527

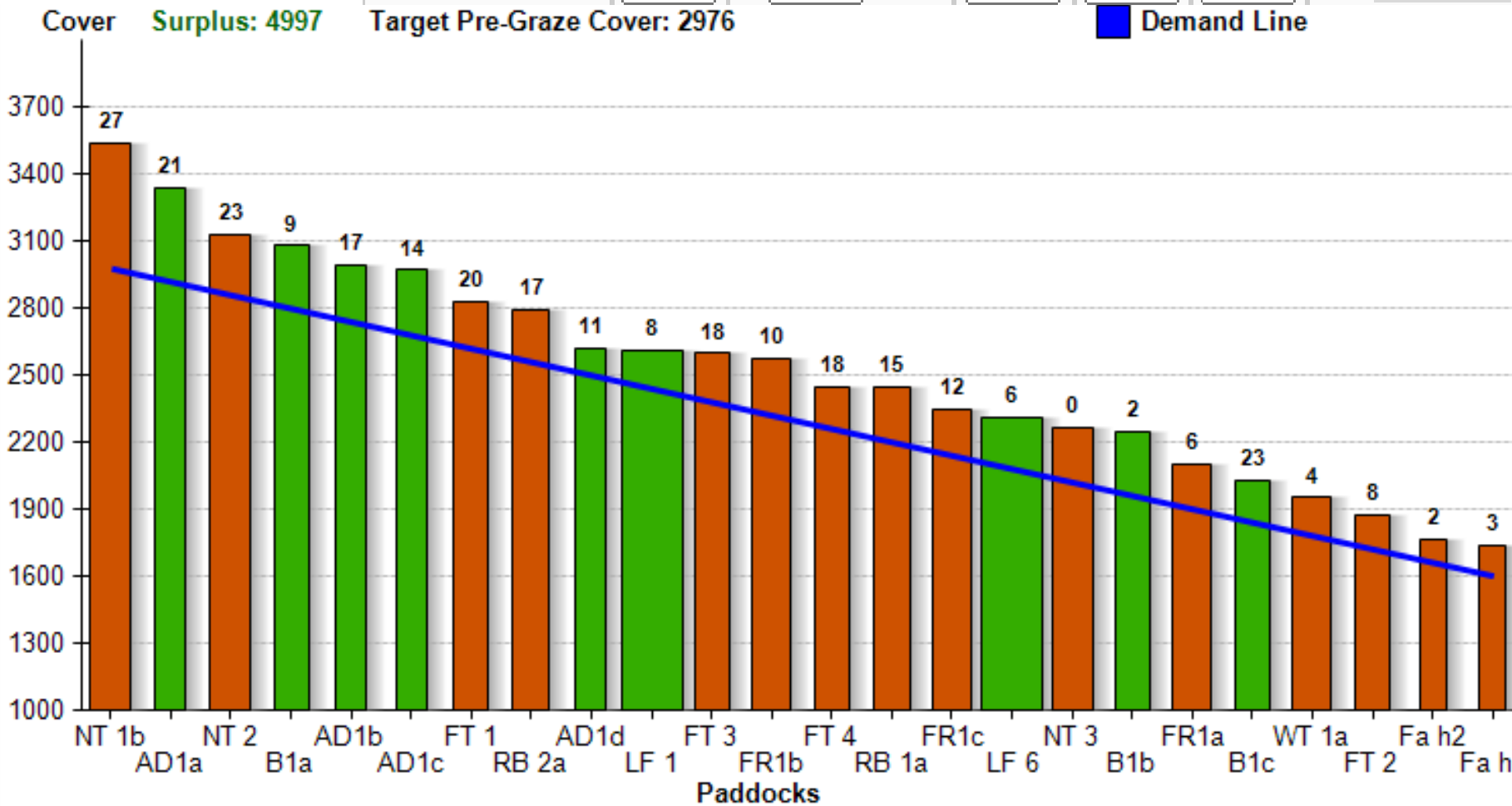
Total Area21.4

kgLW/Ha3280

Demand / Day1403

Demand / Ha65.6

	No.	Weight Kg	Grass	Meal	Silage	Mob
Lactating Cows	0	0	0	0	0	Mob 1
Dry Cows	0	0	0	0	0	Mob 1
Cattle 0-1	88	260	5.2	0	0	Mob 1
Cattle 1-2	83	570	11.4	0	0	Mob 2

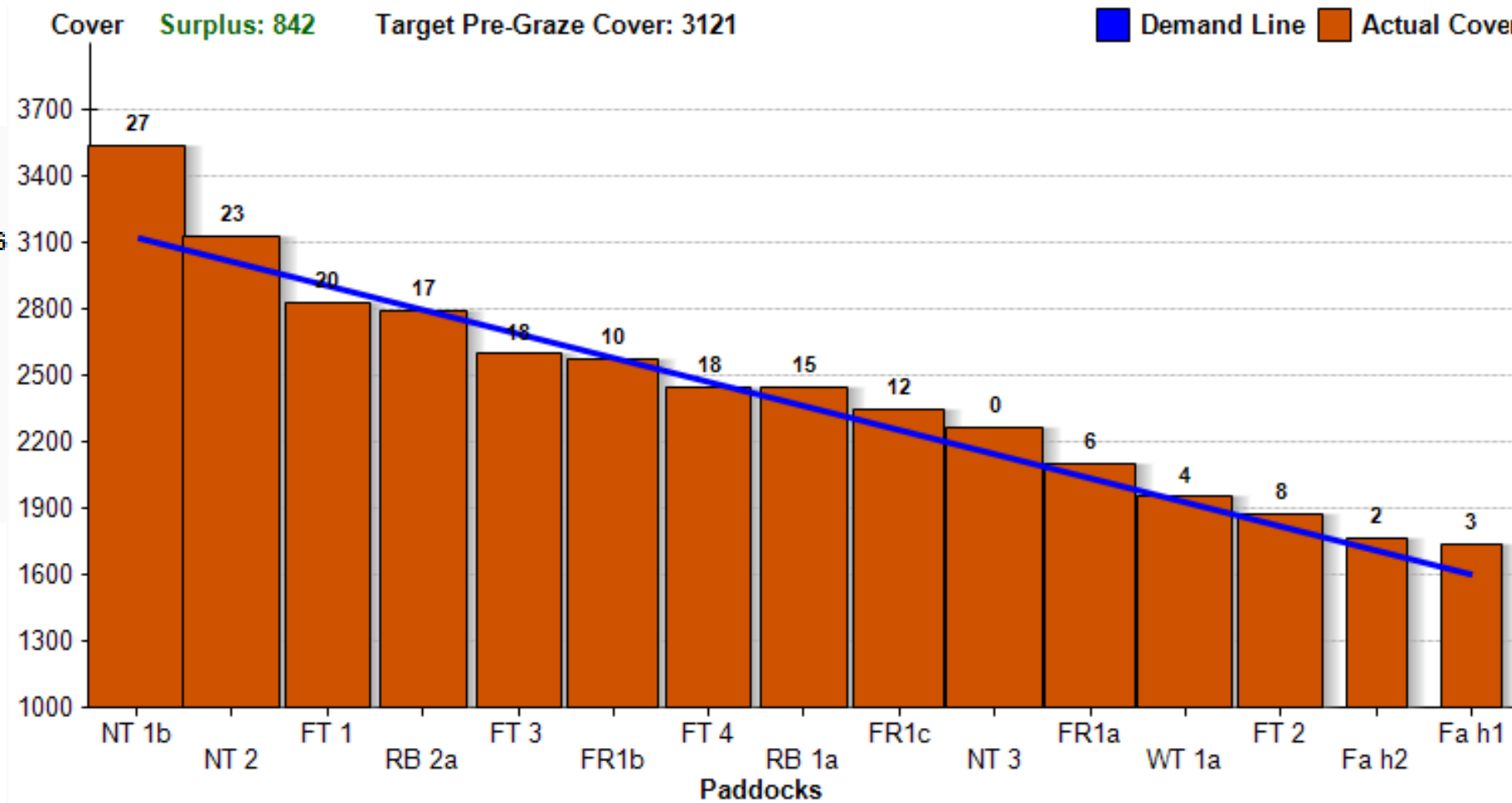


# 1-2-year-olds block

	No.	Weight Kg		Grass	Meal	Silage	Mob
Cattle 1-2	83	570	<a href="#">i</a>	11.4	0	0	<div><div></div>Mob 2</div>

## AgriNet

Date Measured	21/06/2025	▼
Selected Mob	Mob 2	▼
Daily Growth	65.2 (over 7 days)	<a href="#">i</a>
Farm Cover	2459	
Total Area	13.06	
kgLW/Ha	5374	
Demand / Day	946	
Demand / Ha	72.4	



# 0–1-year-old block



Date Measured

21/06/2025

Selected Mob

Mob 1

Daily Growth

87.5 (over 7 days)

(115.4)

Farm Cover

2633

Total Area

8.34

kgLW/Ha

8416

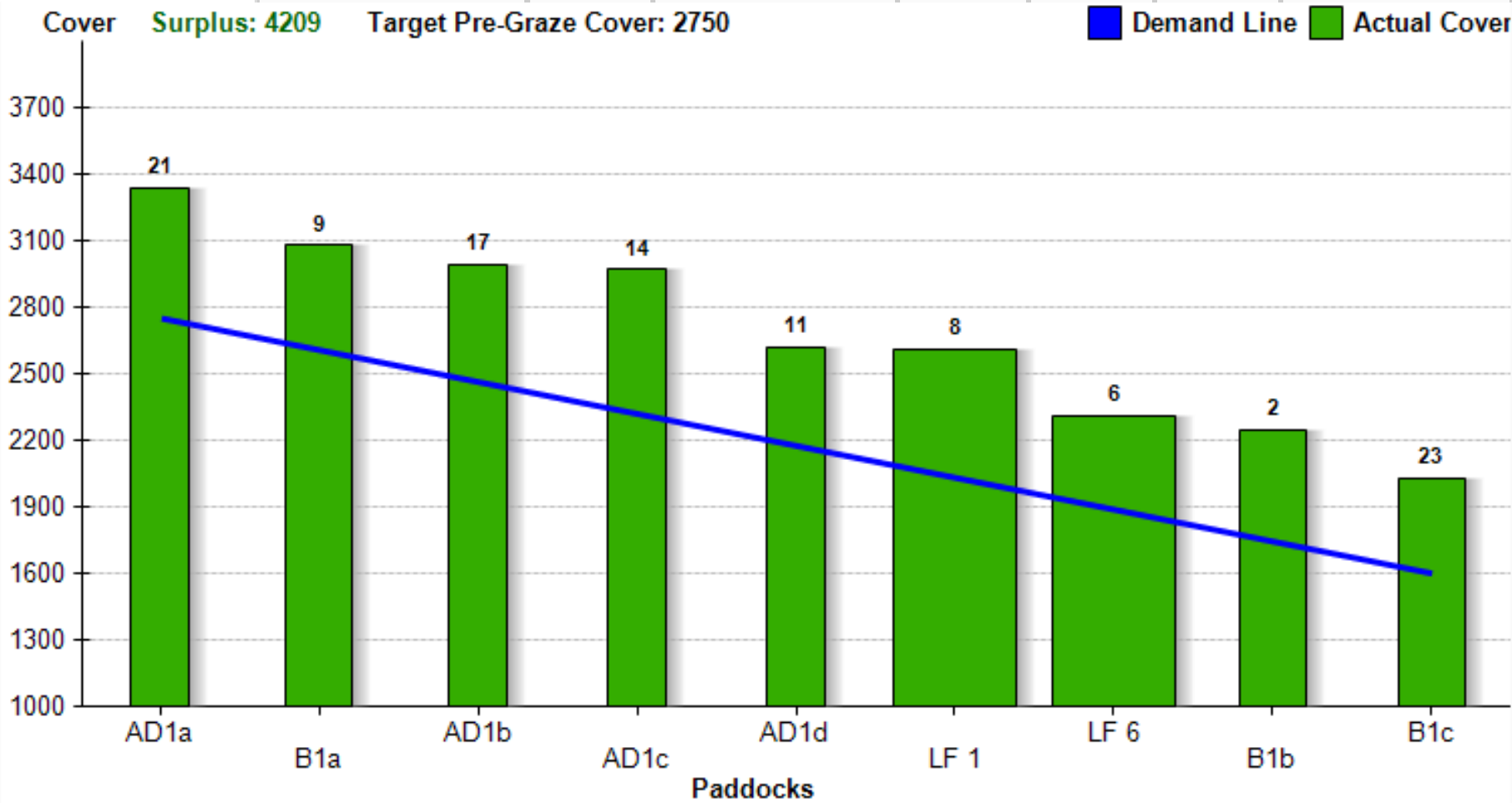
Demand / Day

457

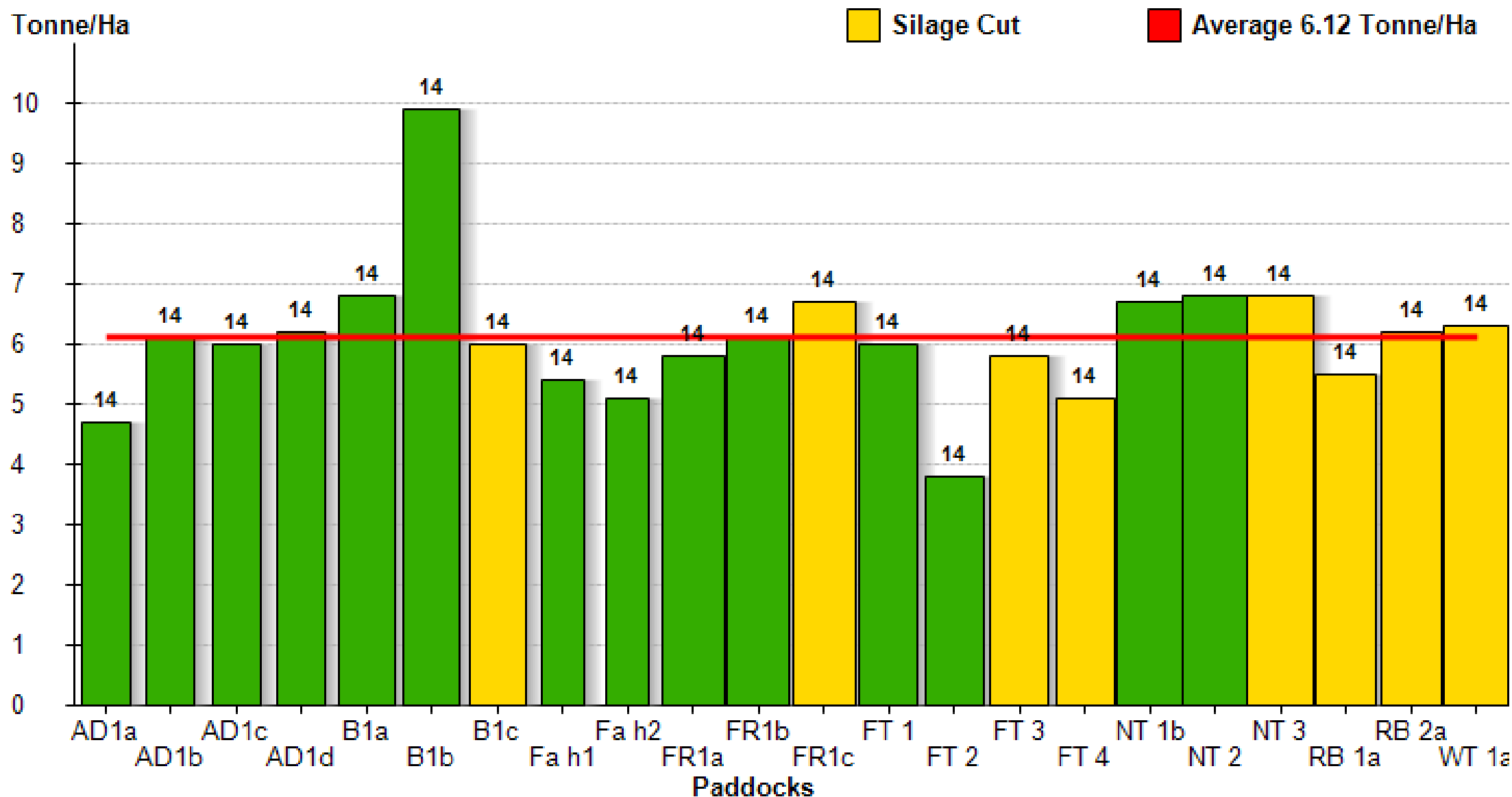
Demand / Ha

54.8

	No.	Weight Kg	Grass	Meal	Silage	Mob
Lactating Cows	0	0	0	0	0	Mob 1
Dry Cows	0	0	0	0	0	Mob 1
Cattle 0-1	88	260	5.2	0	0	Mob 1



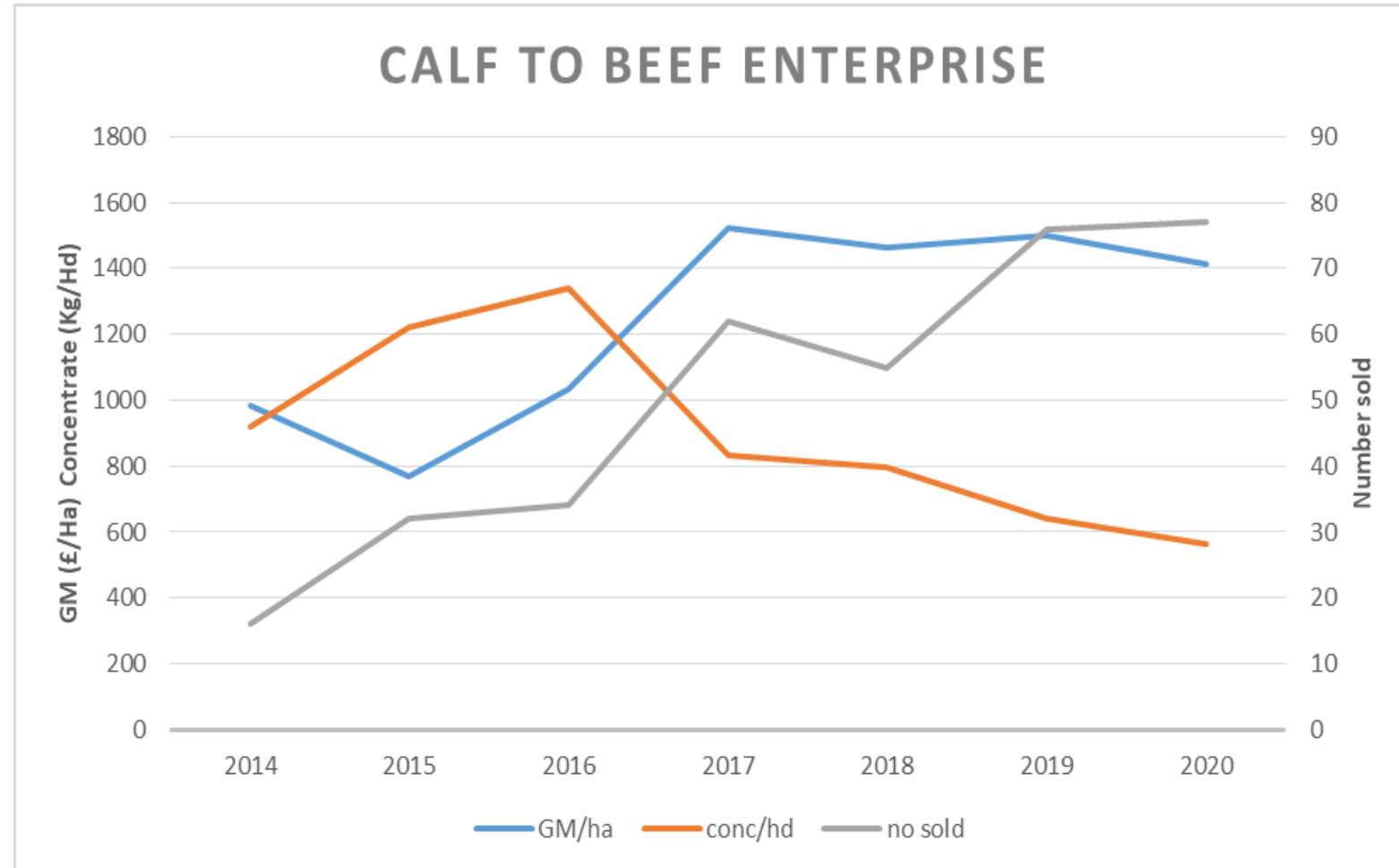
# Grass grown this year so far





# Cattle performance

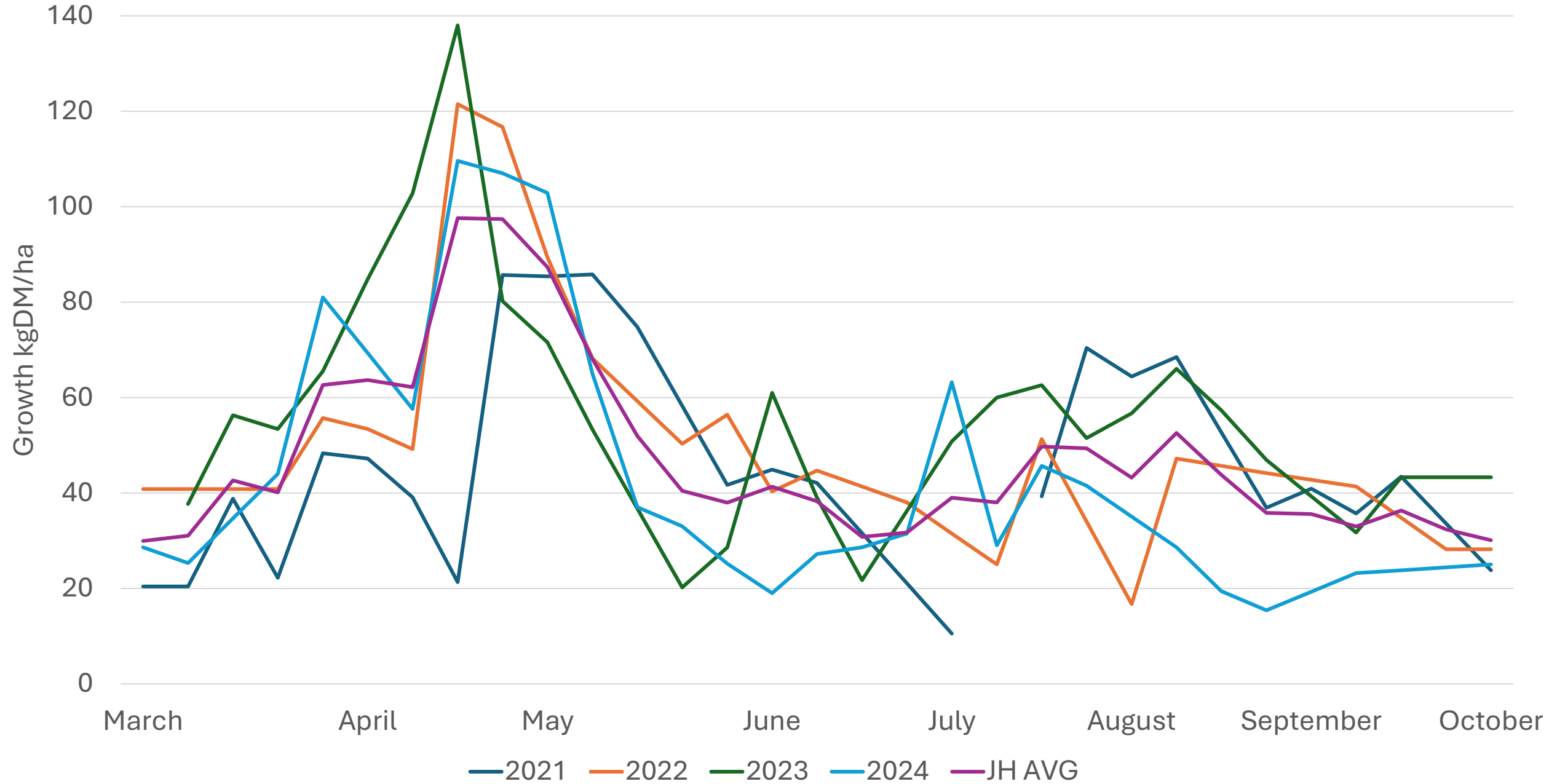
- Autumn born
- Purchased off one farm
- Reared on farm 1<sup>st</sup> winter
- Turnout at 6 months (March) 180-200kg
- 1<sup>st</sup> housing target 380-400kg
- 2<sup>nd</sup> grazing DLWG target 0.9-1kg
- Turnout target 440-450kg
- 2<sup>nd</sup> grazing mid season weigh (July) target 540-580kg
- 2<sup>nd</sup> grazing DLWG target 0.9-1.3kg
- Some AA finished off grass in out remaining finished indoors October onwards
- Average carcass weight 320-340KG at 22-24 months



# Reseeding

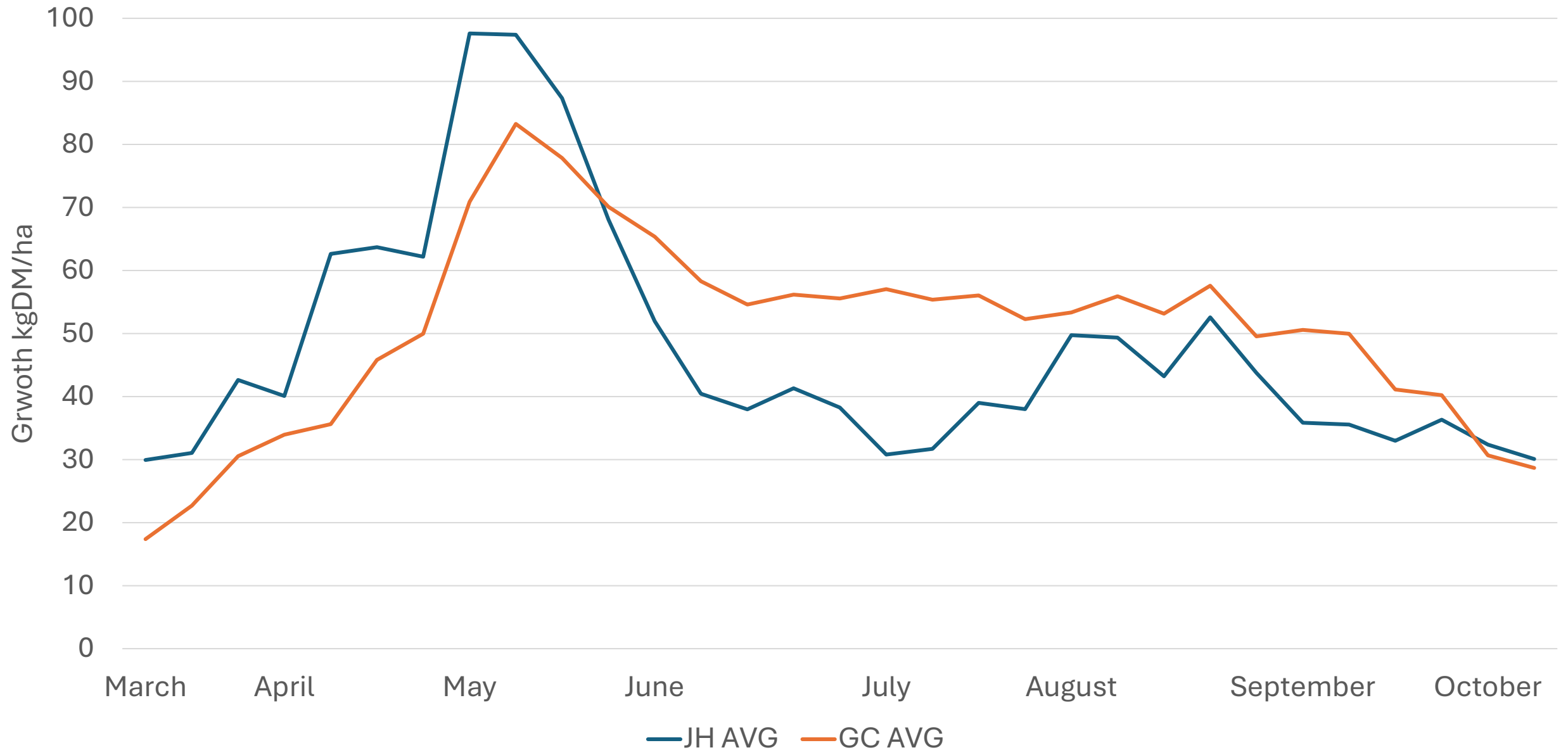
- 10% reseeded each year
- Decisions to reseed based on AgriNet data
- Only autumn reseeded following either winter barley or forage rape.
- Method - ploughing, power harrow and Einblock seed drill
- Multispecies for ewes
- Red clover for silage
- Clover included in cattle grazing mix

# James Henderson Grass Growth



# James Henderson's Grass Growth vs GrassCheck Average

## Grass Growth (2021-2024)



## Multi-species mixtures

Grass	Legume	Herb
Perennial Ryegrass	White Clover	Chicory
Timothy	Red Clover	Plantain
Cocksfoot	Alsike Clover	Burnet, Yarrow
Meadow, Tall Fescue	Birdsfoot trefoil, Sainfoin	Sheeps parsley

## Sowing

- Full reseed
- Control weeds – clean seed bed
- Ideally in spring
- Good soil temperature ( $>10^{\circ}\text{C}$ )
- pH 6.3-6.5, P and K Index 2
- Fine, firm seed bed
- Sow at 10mm

## Grazing management

- First grazing: pull test
- Rotationally graze 25-28 days
- Grazing residual 5-6cm
- Avoid poaching
- Maintain soil pH, P and K
- Surplus can be cut for silage
- 48 hour wilt



## Red clover silage

- ✓ 3-4 cuts per year
- ✓ High protein silage
- ✓ 12-15 t DM/ha year with little or no artificial N

## Sowing

- Full reseed
- Ideally in spring
- Clean, weed-free fields
- pH 6.5, P and K Index 2
- Light conservation cut
- Red clover must over winter before using post emergence spray

## Silage management

- Cut at 6-8 week intervals (12-14 t DM/ha/year)
- Cut at 7cm
- Avoid leaf shatter
- Good wilt – 48 hours
- Apply adequate P and K
- 25kg K and 3kg P per t/ha
- 5 year break between crops

### Practical Feeding Information

		Comments	First cut av. 2015	Range
Dry matter (%) *	29.3	Good	29.0	15 to 55
pH *	4.0	Good	4.2	3.5 to 5.0
Ammonia (% total N)	9.0	Good	9.3	7 to 15
Protein (% DM) *	20.9	Good	11.6	7 to 16
ME (MJ/kg DM) *	11.2	Good	11.0	9 to 12
D-value (% DM)	70	Good	69	55 to 77
HFIS intake (g/kgW <sup>0.75</sup> )	102	Excellent	YNT <sub>1</sub>	50 to 105