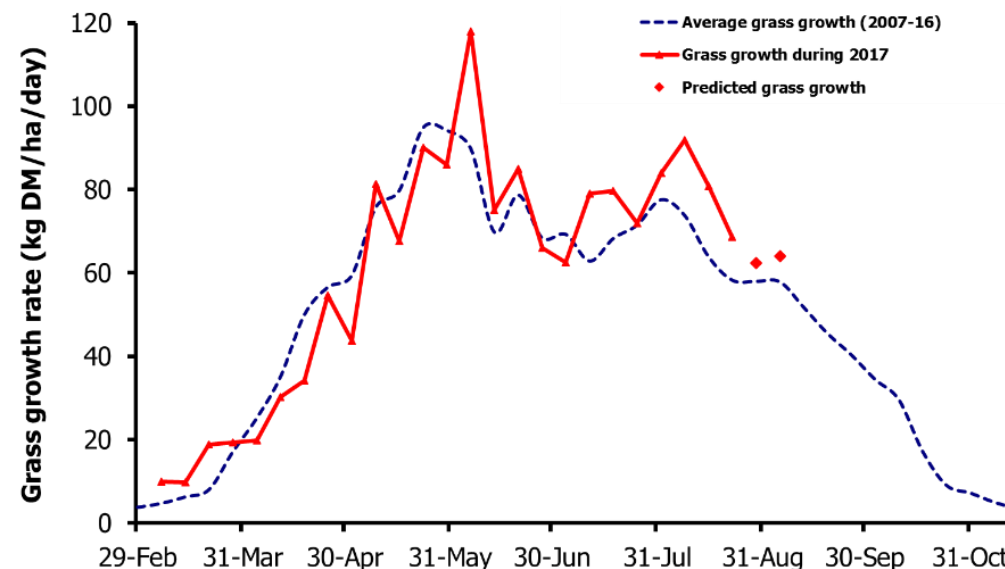
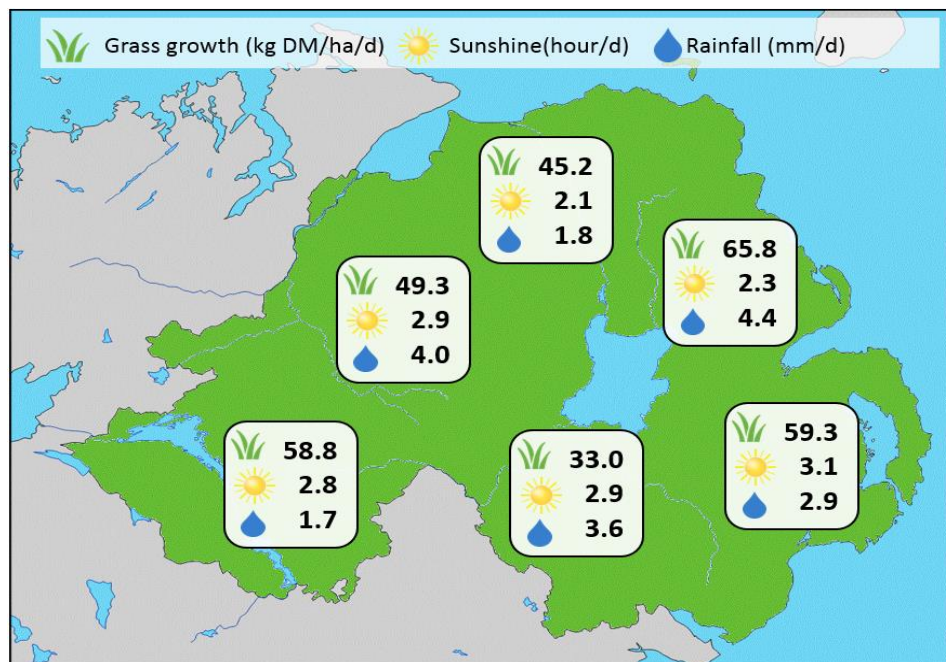


Week Beginning 21 August 2017



MANAGEMENT NOTES:

- Continued wet conditions over the past few weeks are causing a further decline in both grass growth rates and grazing conditions across the province.
- Poor conditions are also having a knock-on effect on grass quality with below average dry matter and metabolisable energy contents for this time of year. Although short-term weather conditions remain challenging, look for opportunities to clean out swards as this will ensure good animal performance from autumn grass.
- More information on the 2017 GrassCheck project will be on show at the AFBI Dairy Innovation in Practice farm walks taking place 12 -14 September. Visit afbini.gov.uk for more information and to register for the events.

Grass Growth (kg DM/ha/day)		Grass Quality	
		GrassCheck plots	On-farm
Dairy farm 7d average*	57.9	DM (%)	12.6
Beef farm 7d average*	45.5	ME (MJ/kg DM)	10.8
GrassCheck plots#		CP (% DM)	16.1
Previous 3 weeks	68.7	WSC (% DM)	9.4
Forecast 7 days	62.3		
14 days	63.9		

*On-farm grass growth data supplied by Agrinet

GrassCheck plots receive 270 kgN/ha/year



@GrassCheck