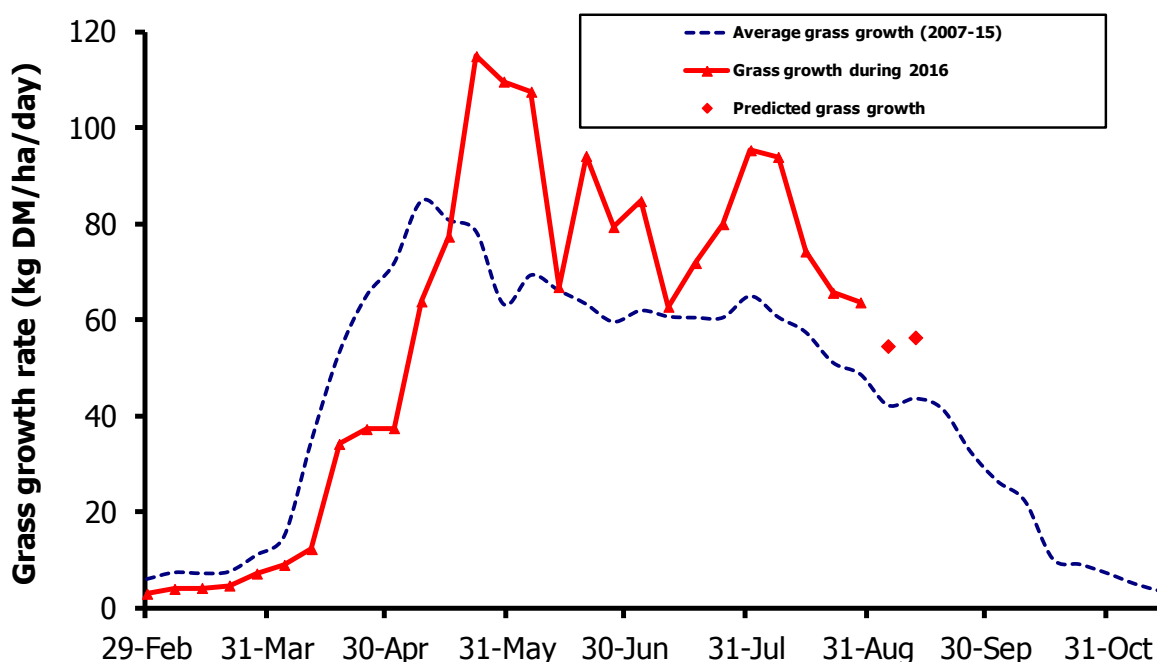


# GrassCheck

Week beginning 29 August



Grass growth and quality measured from swards at Hillsborough and Greenmount

Grass Growth (kg DM/ha/day)*		
Previous 3 weeks	29 Aug	64
Predicted	5 Sep	55
	12 Sep	56

\* 270 kg N/ha/year applied

Grass Quality	
Dry matter (%)	14.0
ME (MJ/kg DM)	10.8
Crude protein (%)	19.1
Sugars (% DM)	8.9

## Management notes.

- Grass growth continues to decline as expected, but is still above the seasonal average and is likely to remain so with the current good weather.
- Both ME and sugars are below average, reflecting the previous unsettled weather, but should improve with the current sunshine.
- With better weather and improved grazing conditions, get fertiliser applications and topping (as required) up to date.
- Rotation length should be increased, with silage aftermaths brought into the grazing cycle, while still aiming for pre graze covers of 2800 – 3000 kg DM/ha.
- Keep monitoring grass supply/demand and aim to increase average farm cover over the next few weeks, to enable extended grazing into the late autumn.