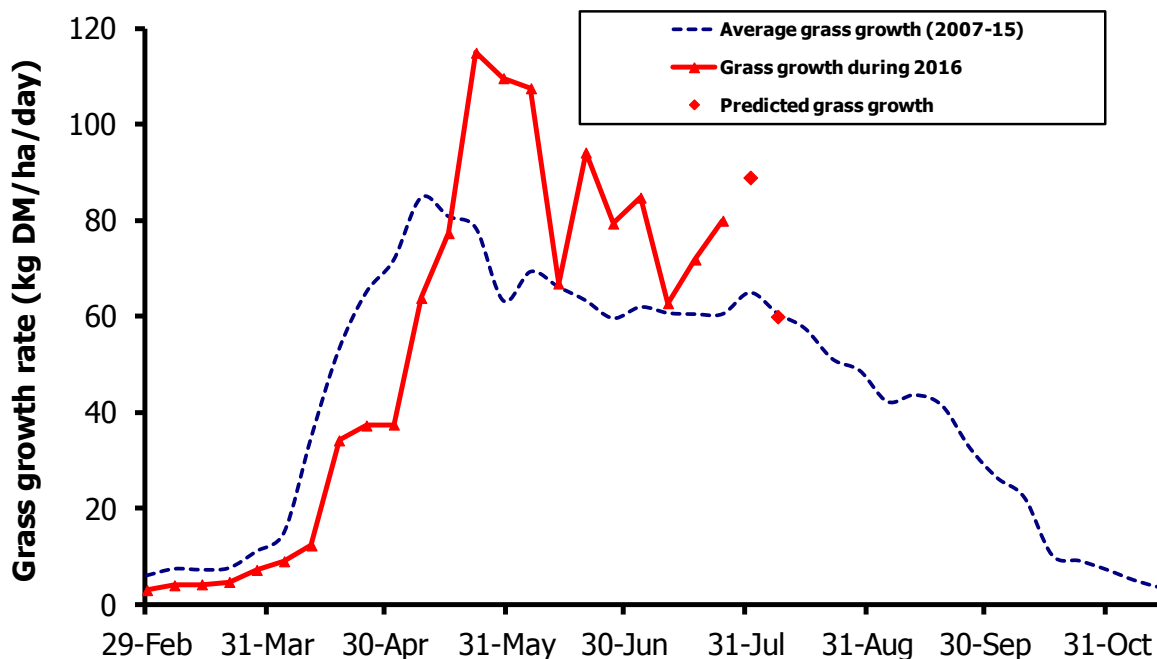


GrassCheck

Week beginning 25 July



Grass growth and quality measured from swards at Hillsborough and Greenmount

Grass Growth (kg DM/ha/day)*		
Previous 3 weeks	25 July	80
Predicted	1 August	84
	8 August	60

* 270 kg N/ha/year applied

Grass Quality	
Dry matter (%)	13.4
ME (MJ/kg DM)	11.4
Crude protein (%)	18.7
Sugars (% DM)	10.7

Management notes.

- Growth continues to be well above the seasonal average and is expected to remain so for the next week. However, forecasted cooler, changeable, weather will likely result in reduced growth rates after next week.
- Grass quality is around the seasonal norm, despite higher than average growth.
- Continue to measure grass covers across the grazing area and manage daily grass allocation accordingly.
- Aim to have pre-graze covers of 2800 – 3000 kg DM/ha (1/3 up a wellington boot), to maximise grass quality and optimise intakes.
- Listen to what the cows are telling you about your grassland management. Are they content just before milking, while not leaving surplus grass behind?