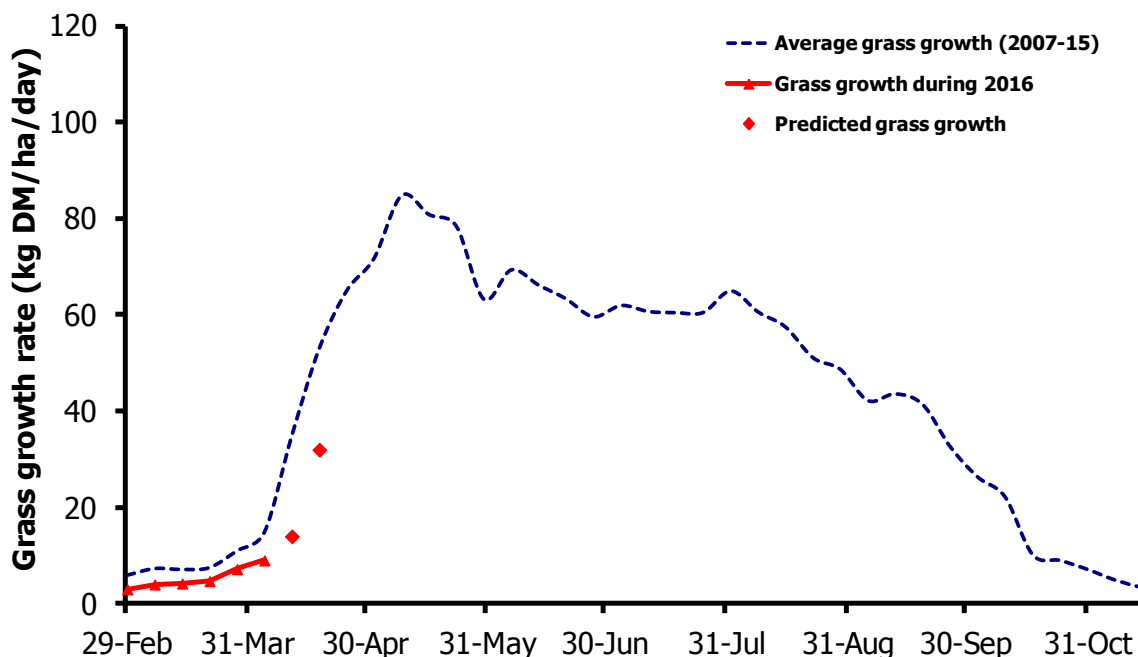


# GrassCheck

Week beginning 4 April 2016



Grass growth and quality measured from swards at Hillsborough and Greenmount

Grass Growth (kg DM/ha/day)*		
Previous 3 weeks	4 Apr	9.0
Predicted	11 Apr	14
	18 Apr	32

\* 270 kg N/ha/year applied

Grass Quality	
Dry matter (%)	14.6
ME (MJ/kg DM)	11.8
Crude protein (%)	25.7
Sugars (% DM)	7.0

## Management notes.

- Very heavy rain through the first few days of April have had a dramatic effect on ground conditions, with fields very wet again in many parts of the country.
- The weather has also remained cold and this continues to keep growth rates low, with the forecast up to mid April indicating that this pattern will continue.
- Using back fences, alternating entry/exit points and grazing for short 2 to 3 hour durations is currently essential, with the potential to graze for short periods after milking twice daily were grass supplies and ground conditions allow.
- As we progress through April growth can double from one week to the next, so every effort should be made to get the herd grazing so that the grazing platform is setup before the inevitable surge in growth arrives.