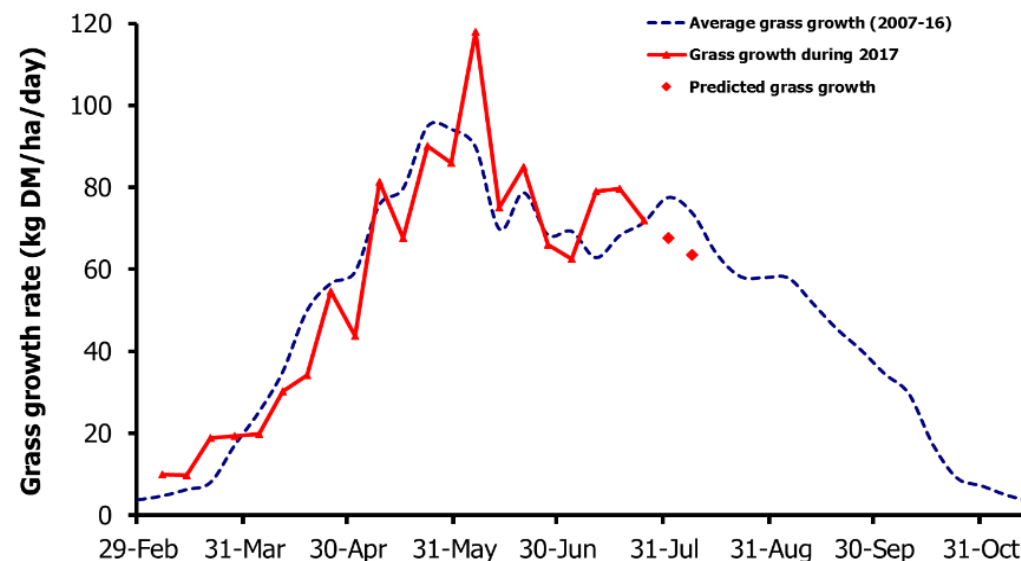
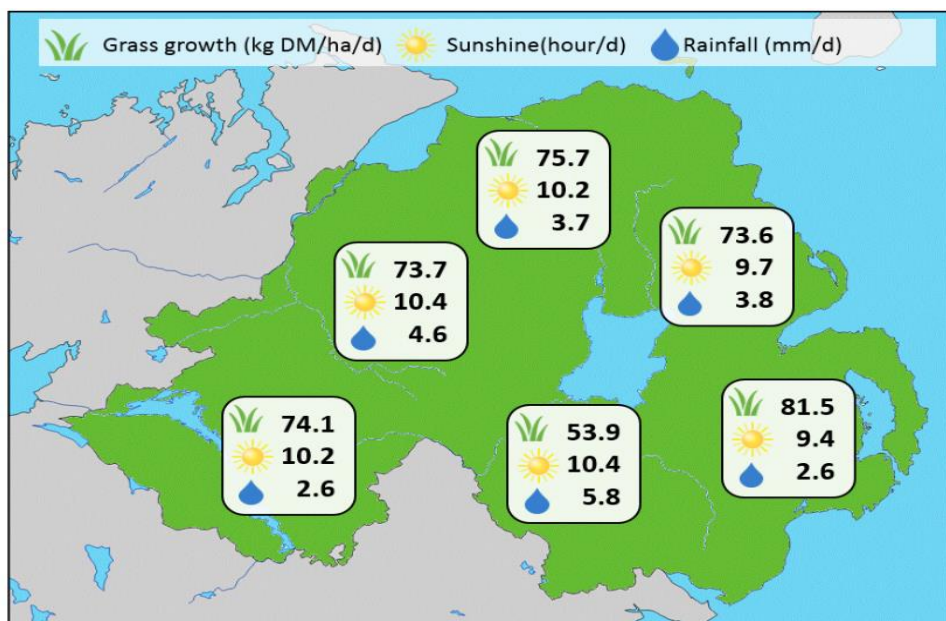


Week Beginning 24 July 2017



## MANAGEMENT NOTES:

- Growth has remained above expected for the past few weeks, with good sunshine levels and some heavy rainfall events boosting growth on the drier GrassCheck sites.
- Across both plots and farms, grass fibre contents are above average, having a negative impact on grass ME and potentially impacting on animal performance.
- Ensuring good sward clean outs will help increase grass quality again. If residuals of 1500-1600kg DM/ha aren't being met, cutting out stemmy pastures when grass surpluses are available or topping can help improve quality in the next round.
- For the latest grass and weather info visit [agrisearch.org/GrassCheck](http://agrisearch.org/GrassCheck)

Grass Growth (kg DM/ha/day)		Grass Quality	
		GrassCheck plots	On-farm
Dairy farm 7d average*	79.8	DM (%)	13.3
Beef farm 7d average*	59.6	ME (MJ/kg DM)	10.9
<b>GrassCheck plots#</b>		CP (% DM)	15.8
Previous 3 weeks	72.0	WSC (% DM)	9.5
Forecast 7 days	67.7		
Forecast 14 days	63.6		

\*On-farm grass growth data supplied by Agrinet

# GrassCheck plots receive 270kg N/ha/year

