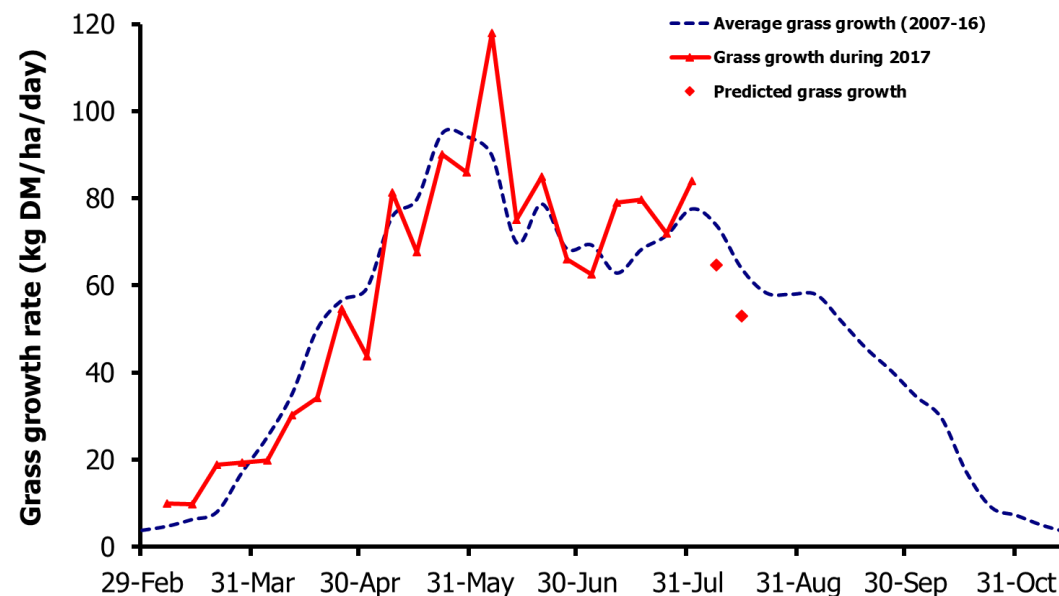
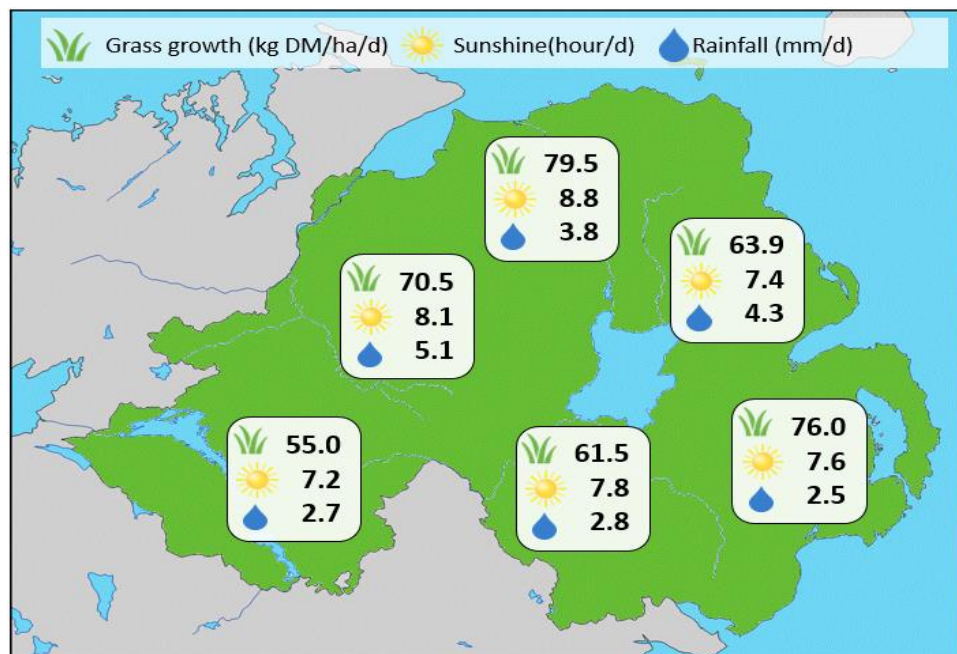


## Week Beginning 31 July 2017



### MANAGEMENT NOTES:

- Wet conditions dominated in the month of July however high temperatures have resulted in good growing conditions, with the total monthly growth 24% above the long-term average (2369kg DM/ha). Growth rates are expected to start to decline in the next few weeks as day lengths and temperatures continue their seasonal decline.
- Heavy rainfall is impacting heavily again on grass dry matter contents and some farms are being forced to house cattle with ground conditions deteriorating.
- For grazing stock, back-fencing grazed areas and moving stock daily to a fresh area will help minimise poaching.
- For the latest grass and weather info visit [agrisearch.org/GrassCheck](http://agrisearch.org/GrassCheck)

Grass Growth (kg DM/ha/day)		Grass Quality	
		GrassCheck plots	On-farm
Dairy farm 7d average*	66.1	DM (%)	12.0
Beef farm 7d average*	71.8	ME (MJ/kg DM)	11.2
<b>GrassCheck plots#</b>		CP (% DM)	18.0
Previous 3 weeks	83.9	WSC (% DM)	8.4
Forecast 7 days	64.7		9.9
Forecast 14 days	53.0		

\*On-farm grass growth data supplied by AgriNet

# GrassCheck plots receive 270kg N/ha/year



@GrassCheck