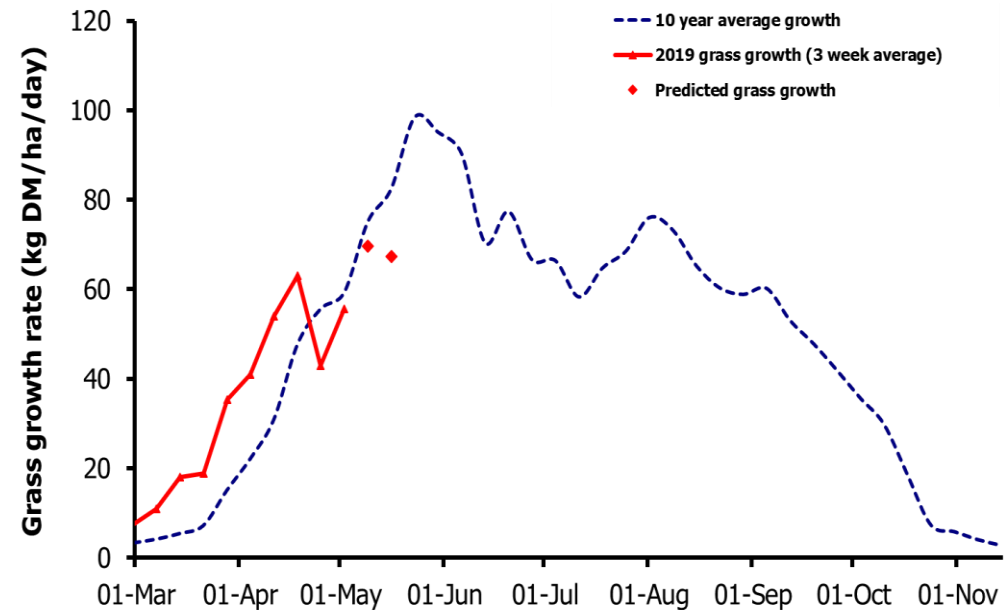
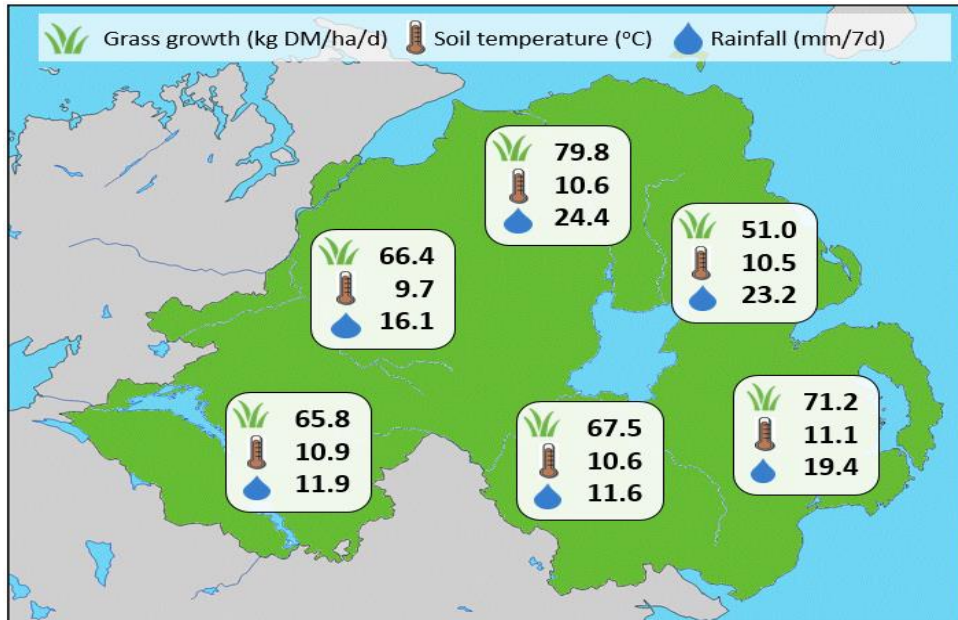


Week Beginning 29 April 2019



Weekly Grass Growth (kg DM/ha/day)		
GrassCheck plots		55.7
Dairy farms*		75.9
Beef & sheep farms*		59.9
Forecast	7 day	69.6
	14 day	67.3

	Grass Quality	
	Plots	On-farm
DM (%)	14.8	20.1
ME (MJ/kg DM)	11.4	11.6
CP (% DM)	21.6	18.1
WSC (% DM)	11.5	15.8

MANAGEMENT NOTES:

- Grass growth rates have continued to improve this past week, supported by high soil temperatures. Weather forecasts suggest a drop in air temperature in the next two weeks forcing lower growth predictions below average for this time of year.
- Grass quality remains high across farms and now is a good time to review potential M+ values for grass.
- Good growth on silage paddocks in recent weeks means many farms are considering taking first cut ahead of schedule. Make sure to test grass for ensilability before cutting.

*On-farm grass growth data supplied by AgriNet

GrassCheck plots receive 270 kgN/ha/year

