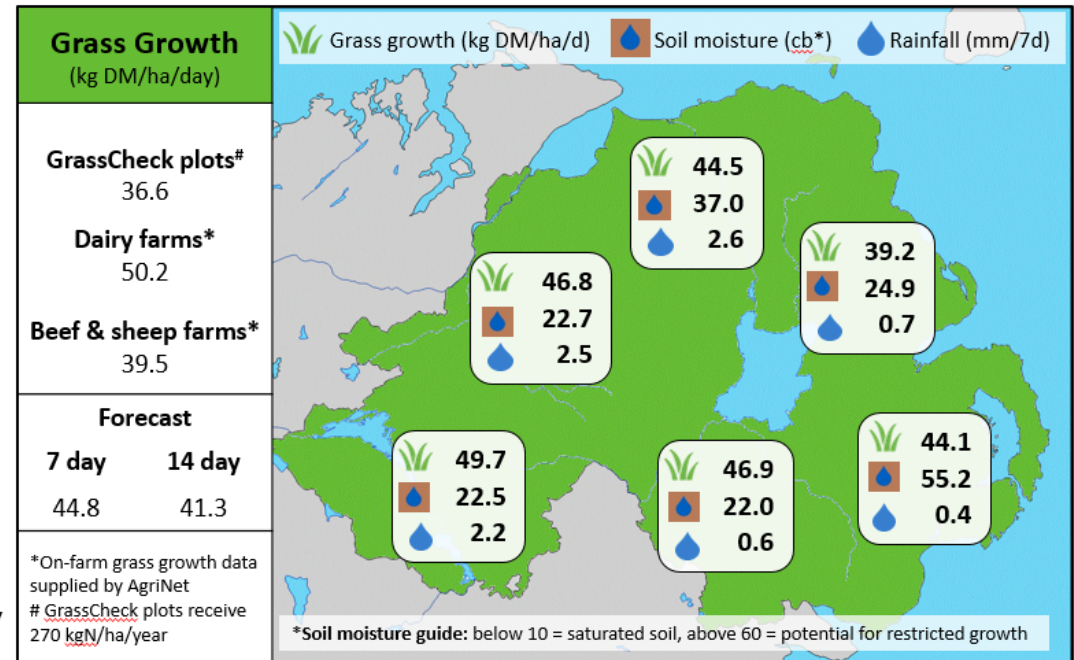
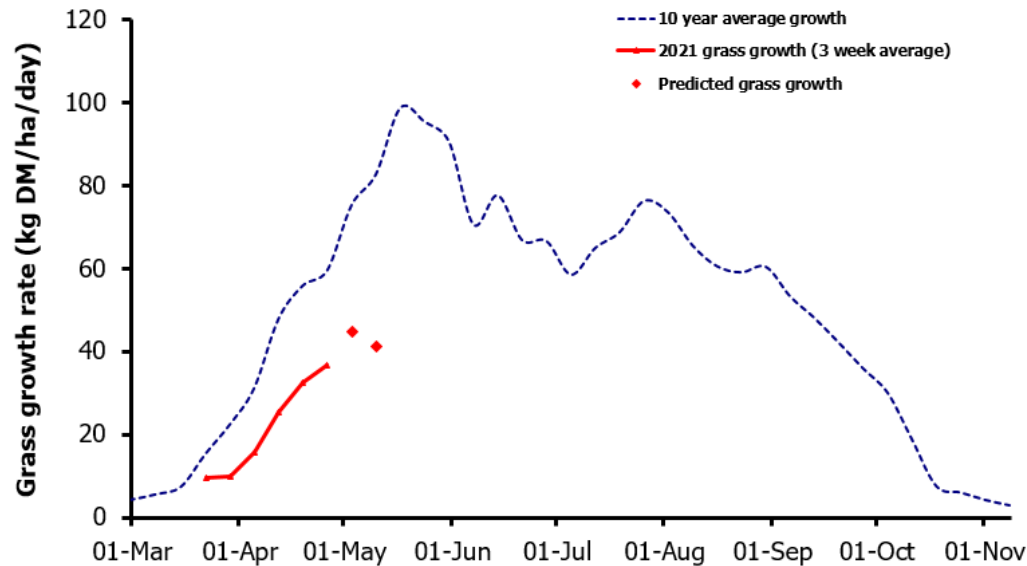


Week Beginning 26th April 2021



MANAGEMENT NOTES:

- Grass growth continues to be restricted due to the prolonged dry spell and relatively cool temperatures. Based on forecasting models, growth during April is predicted to be approximately 50% of the 10-year average.
- Buffer feeding, either silage or concentrates, continues to be a useful intervention to keep on track with the grazing plan. It is important to ensure that average farm cover does not fall below 2100Kg DM/ha.
- Continue to walk the farm weekly to assess regrowths and grass availability. To keep quality grass in the diet, it might be worth skipping heavy covers at the end of the first rotation and close this area for silage.
- Continue to follow grazed paddocks with planned fertiliser applications, to take full advantage of the growth spurt when it arrives.

Value of Grass		Grass Quality	
Dairy – maintenance plus (M+) (kg/cow/day)*	22.7	DM (%)	22.6
Growing animals – daily live weight gain (kg/head/day)**	1.14	CP (% DM)	15.0
*M+ calculated assuming: 650kg cow, and 16 kg DMI. Maintenance=75 MJ/day, 5.3 MJ/kg milk **Beef daily gain assuming: 300 kg beef steer, and 6.6 kg DMI. Maintenance=35 MJ/day, 40 MJ/kg gain		WSC (% DM)	18.5
		ME (MJ/kg DM)	12.2