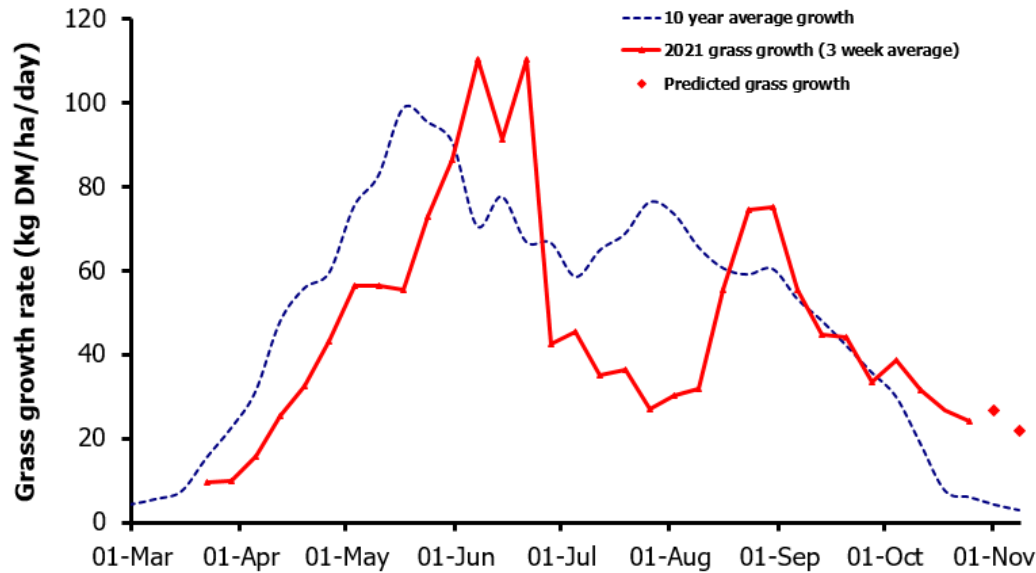
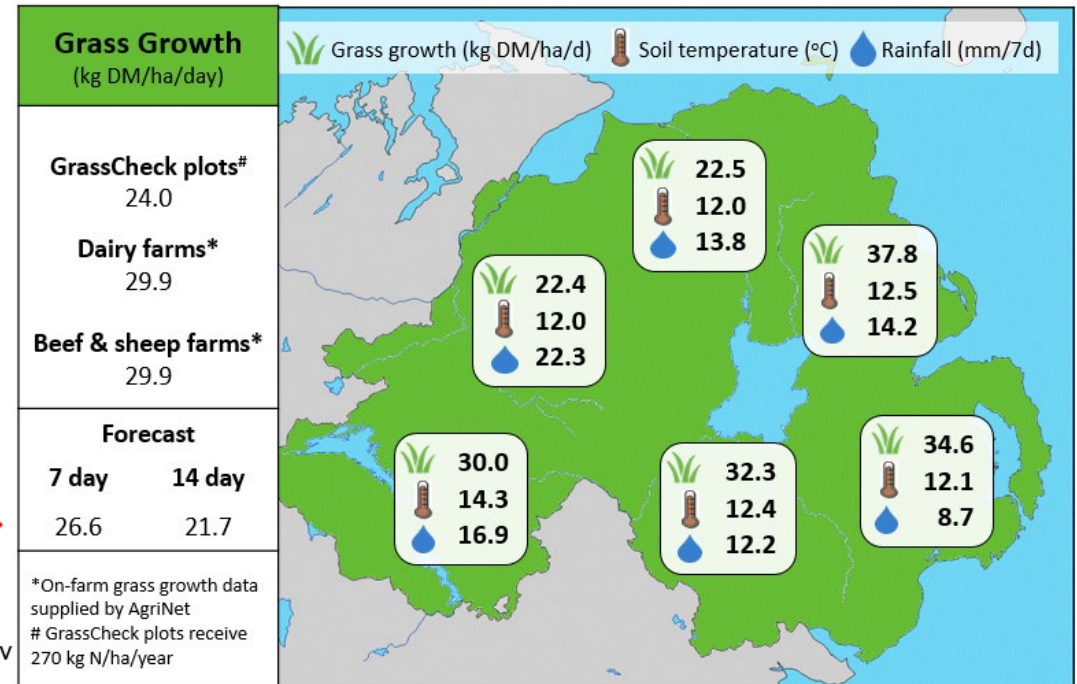


## Week Beginning 25<sup>th</sup> October 2021



### MANAGEMENT NOTES:

- This will be our final bulletin for 2021. Grass growth is still significantly above the seasonal average. However, ground conditions are beginning to deteriorate and housing of livestock is well underway.
- GrassCheck plot yields for this season were 1.9 t DM/ha below the long-term average, impacted mainly by the cold and dry spring, and the drought conditions during the summer. However, there has been considerable regional variation, with Co. Fermanagh farms growing approximately 2t DM/ha more grass than farms in Co. Down.
- Many thanks to our GrassCheck farmers and to the staff at AFBI, CAFRE and AgriSearch for their contributions this year.



Value of Grass		Grass Quality	
Dairy – maintenance plus (M+) (kg/cow/day)*	6.8	DM (%)	12.9
Growing animals – daily live weight gain (kg/head/day)**	0.87	CP (% DM)	23.2
*M+ calculated assuming: 650kg cow, and 10.5 kg DMI. Maintenance=75 MJ/day, 5.3 MJ/kg milk **Beef daily gain assuming: 300 kg beef steer, and 6.6 kg DMI. Maintenance=35 MJ/day, 40 MJ/kg gain		WSC (% DM)	6.4
		ME (MJ/kg DM)	10.6