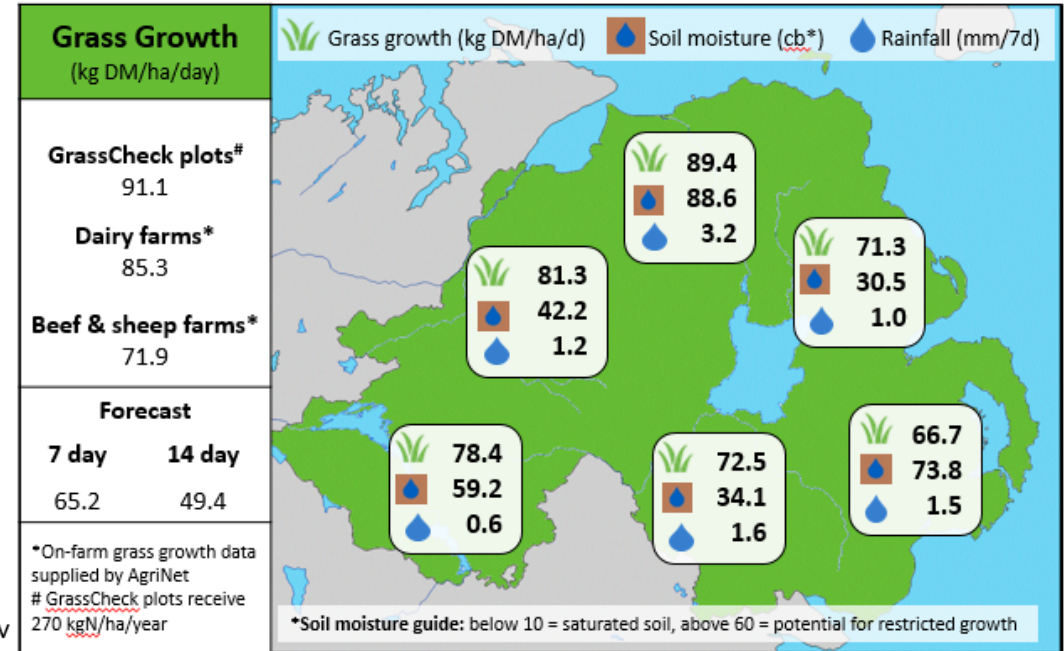
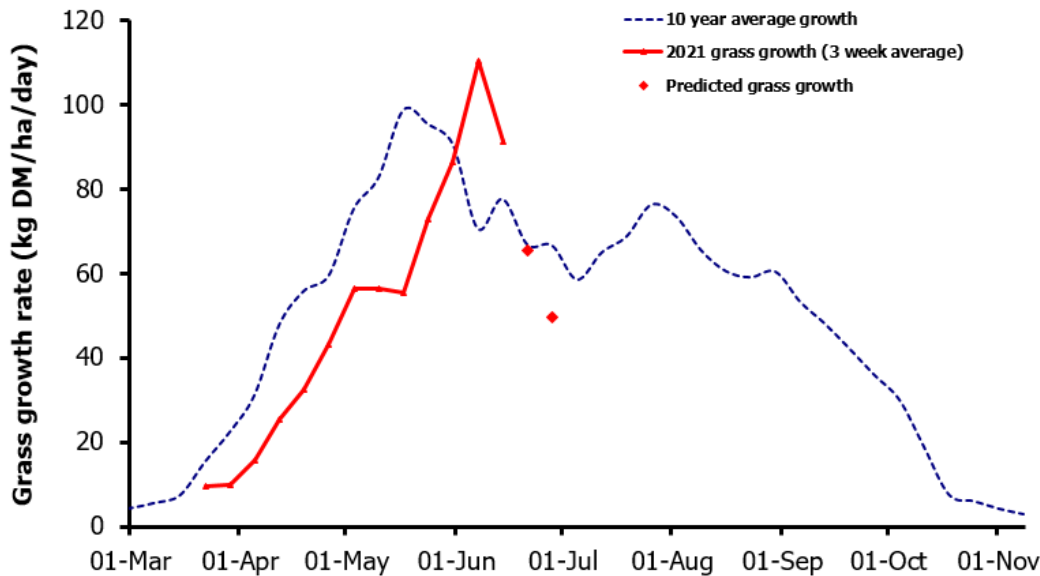


## Week Beginning 14<sup>th</sup> June 2021



### MANAGEMENT NOTES:

- Grass growth rates have continued to be exceptionally high during the past week, however, the effects of soil moisture deficit are apparent in some areas. Growth forecasting models are predicting a sharp decline in growth due to mainly dry conditions forecast over the next two weeks.
- It is essential to measure grass growth regularly to enable grass budgeting for the next few weeks. On some farms grass growth is already below 60 kg DM/ha/day. Where necessary, aim to lengthen the grazing rotation by bringing in silage ground and/or supplementary feeding.
- The favourable conditions are enabling target residuals (1600-1800kgDM/ha) to be achieved, which will reset quality for the next rotation.

Value of Grass		Grass Quality	
Dairy – maintenance plus (M+) (kg/cow/day)*	18.1	DM (%)	17.7
Growing animals – daily live weight gain (kg/head/day)**	1.01	CP (% DM)	17.0
*M+ calculated assuming: 650kg cow, and 15 kg DMI. Maintenance=75 MJ/day, 5.3 MJ/kg milk **Beef daily gain assuming: 300 kg beef steer, and 6.6 kg DMI. Maintenance=35 MJ/day, 40 MJ/kg gain		WSC (% DM)	14.3
		ME (MJ/kg DM)	11.4