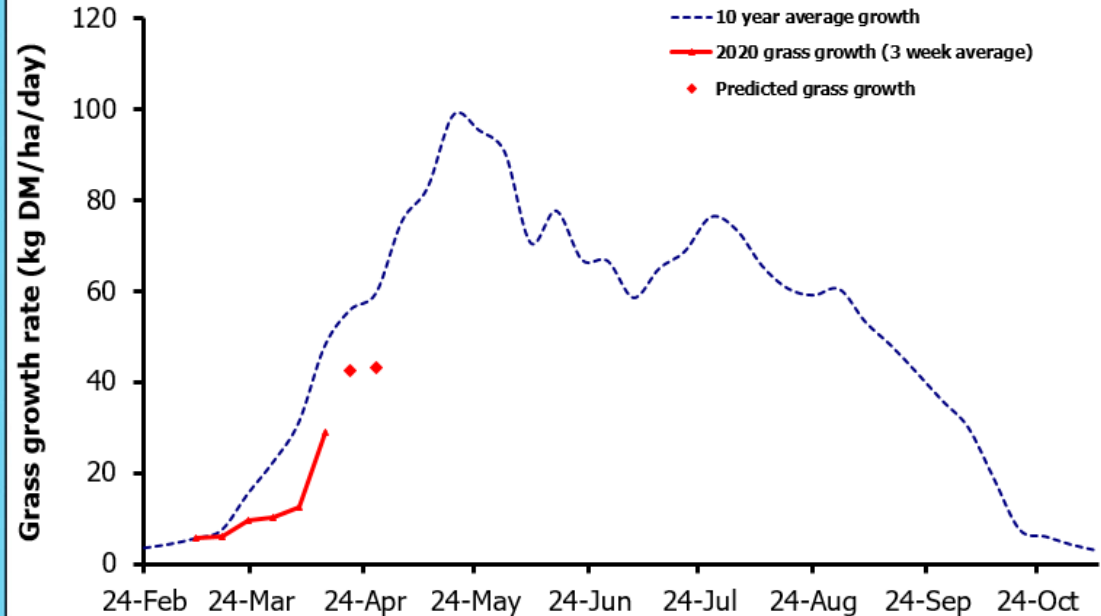
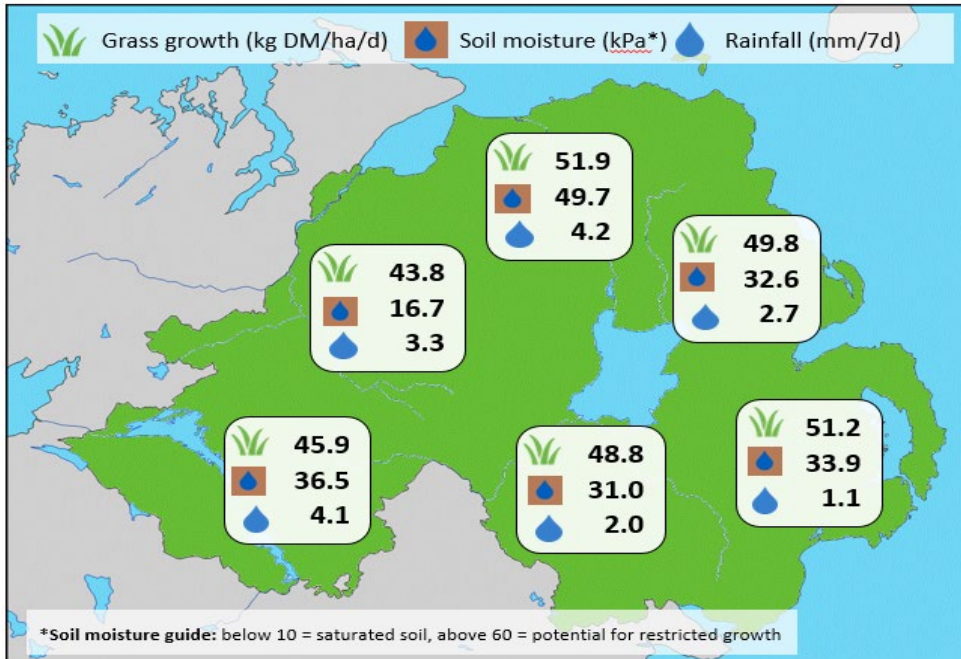


Week Beginning 13 April 2020



Weekly Grass Growth (kg DM/ha/day)		
GrassCheck plots#	28.9	
Dairy farms*	55.5	
Beef & sheep farms*	40.7	
Forecast	7 day	42.3
	14 day	43.1

Grass Quality	
Oven DM (%)	18.1
Typical values:	
ME (MJ/kg DM)	12.2
CP (% DM)	23.7
WSC (% DM)	14.0

MANAGEMENT NOTES:

- This week finally saw some significant uplift in GrassCheck plot growth rates, up +15 kg DM/ha/d to 28.9 kg DM/ha/d, though grass growth on farms and plots is still lagging behind the long-term average at present.
- Soil conditions continue to dry with the prolonged sunny weather, and average GrassCheck farm soil moisture recordings are now shown on the chart. With little rain in the current forecast, there is a risk well-drained ground may begin to suffer from a lack of soil moisture in the coming weeks.
- To manage slow growth rates, consider increasing the size of the grazing area if possible, or utilise silage stores for buffer feeding to slow the rotation if needed.

*On-farm grass growth data supplied by AgriNet

GrassCheck plots receive 270 kgN/ha/year

