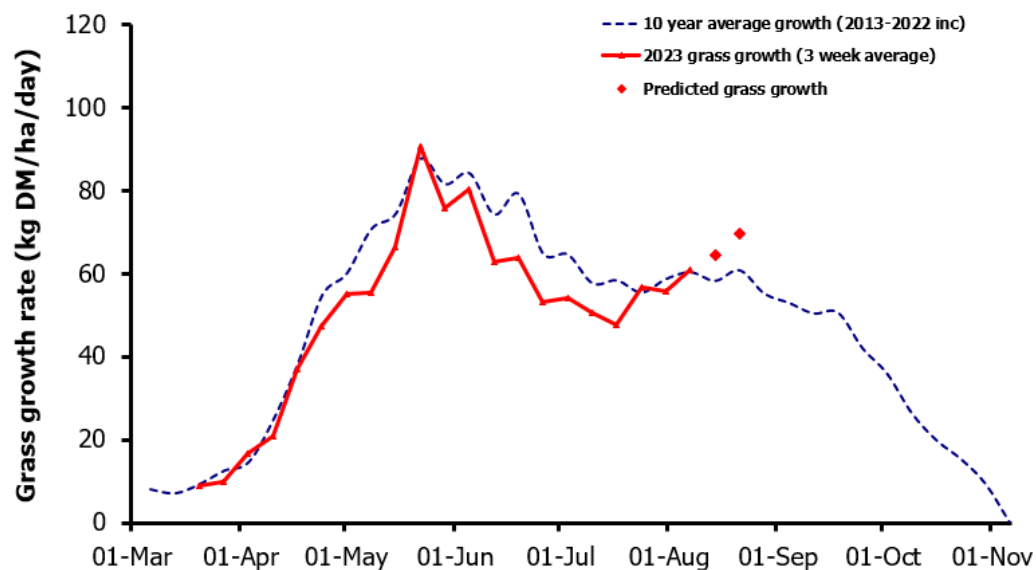
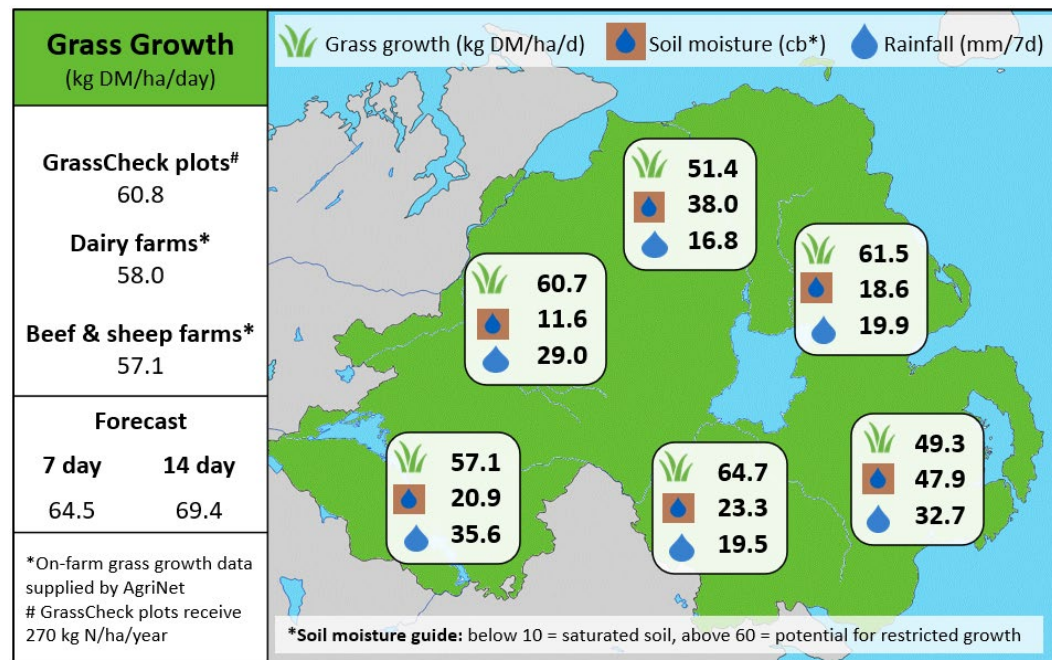


## Week Beginning 7<sup>th</sup> August 2023



### MANAGEMENT NOTES:

- The extended period of unsettled weather continues to affect grass quality, with grass dry matter falling again this week.
- Supplementation may be necessary to meet intake requirements to maintain production or growth – a fodder budget should be prepared for the upcoming autumn/winter period.
- Continue to use wet-weather grazing techniques and with growth forecast to increase in the coming weeks, ear-mark heavy covers for removal when possible to maintain quality as farms begin to build covers for autumn at the end of August.



Value of Grass		Grass Quality	
Dairy – maintenance plus (M+) (kg/cow/day)*	13.4	DM (%)	13.9
Growing animals – daily live weight gain (kg/head/day)**	0.91	CP (% DM)	18.1
*M+ calculated assuming: 650kg cow, and 13.5 kg DMI. Maintenance=75 MJ/day, 5.3 MJ/kg milk		WSC (% DM)	10.0
**Beef daily gain assuming: 300 kg beef steer, and 6.6 kg DMI. Maintenance=35 MJ/day, 40 MJ/kg gain		ME (MJ/kg DM)	10.8