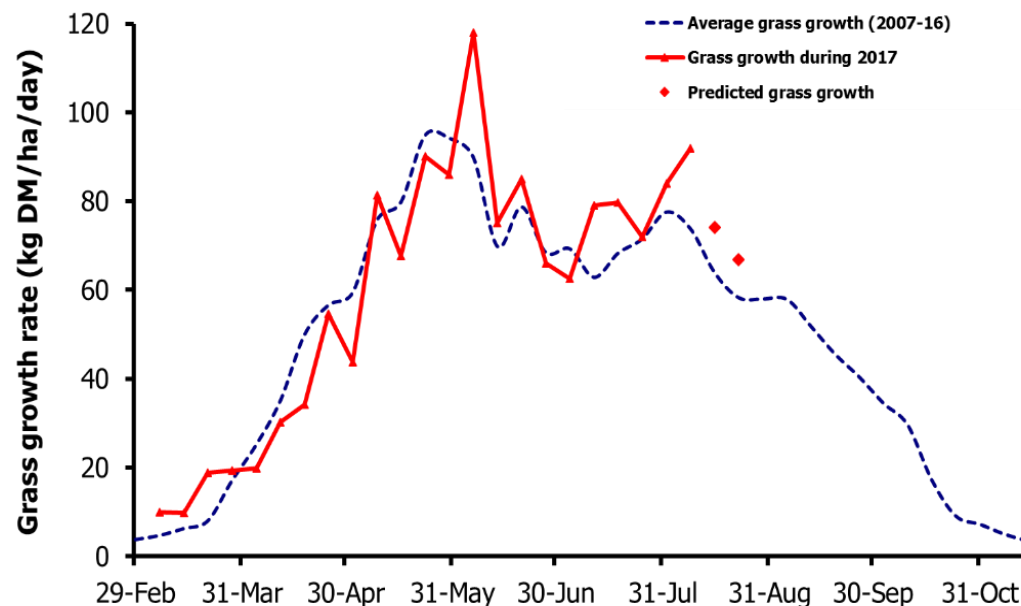
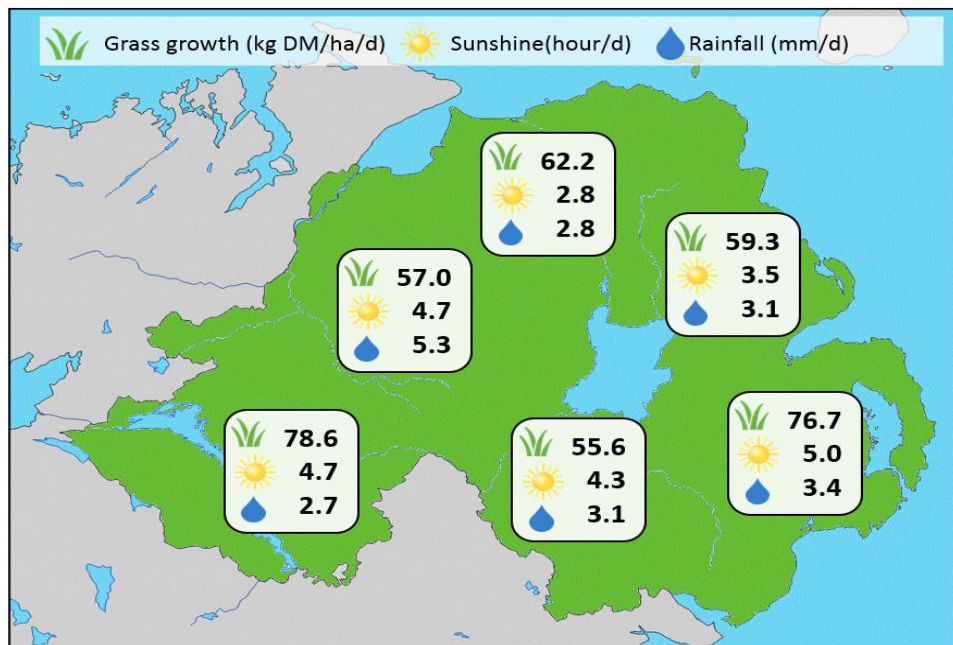


Week Beginning 07 August 2017



MANAGEMENT NOTES:

- Grass growth rates have increased again this week considerably above expected for this time of year, however utilisation of grass remains a challenge for many parts of the province.
- Swards which are not grazed out now due to difficult ground conditions, could be ear marked for round baling when conditions improve. This will prevent grass being wasted and improve sward quality into the autumn.
- With wet soil conditions evident, back-fencing grazed areas and moving stock daily to a fresh area will help minimise poaching.
- For the latest grass and weather info visit agrisearch.org/GrassCheck

Grass Growth (kg DM/ha/day)		Grass Quality	
		GrassCheck plots	On-farm
Dairy farm 7d average*	70.0		
Beef farm 7d average*	60.0		
GrassCheck plots#			
Previous 3 weeks	91.9		
Forecast 7 days	74.1		
14 days	66.9		
		DM (%)	11.9
		ME (MJ/kg DM)	10.9
		CP (% DM)	16.9
		WSC (% DM)	8.8
			12.2
			10.9
			15.0
			9.4

*On-farm grass growth data supplied by AgriNet

GrassCheck plots receive 270kg N/ha/year

